

Skip the \$100 textbook. Opt for a customizable Lab Package.

The lab package is an innovative way to teach meteorology courses through an open-source course management website. Each site is tailored to each instructor's class and includes the high level of instruction you've come to expect from the makers of MetEd lessons.

- The cost of this interactive educational tool is comparable to traditional lab manuals or analysis workbooks
- Teachers and TAs will have early access to tailor the site to their needs
- Personalized registration link for easy student enrollment

SYNOPTIC ANALYSIS LABORATORY PACKAGE

In this lab, students develop practical skills in the following topic areas:

- analysis of advection
- thermodynamic analysis
- surface front analysis
- streamline analysis
- isentropic analysis
- QG analysis
- jetsream analysis
- vorticity and deformation
- *coming soon:* midlatitude cyclone life cycle 1 & 2

Background and Pre-Labs

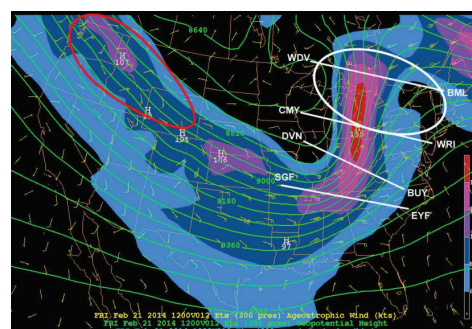
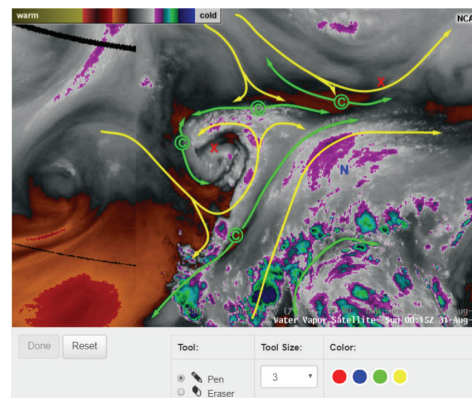
Each lab module contains interactive background and pre-lab sessions to test understanding of theory and allow practice analysis using HTML5 drawing tools.

Analysis Datasets

Print-quality maps, online datasets and written question sets are available for use in blended or face-to-face environments. Instructors can assign analyses of varying difficulty.

Solution Sets

Fully-analyzed maps and written solution sets accompany each lab for instructor, TA and student use.



Learn more

Demo the course at:
www.met.ed.ucar.edu/labs/synoptic/sample_index.htm
 Email us: labpkg@comet.ucar.edu or call: 303.497.8470